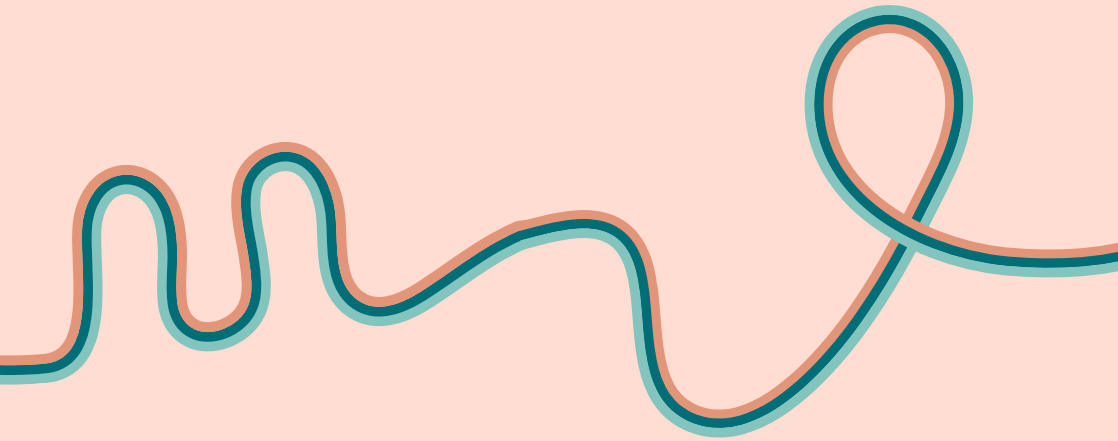


NAWIC SA 2023

# awards for excellence



**NAWIC**  
THE NATIONAL ASSOCIATION OF  
WOMEN IN CONSTRUCTION

nomination  
information

# what you need to know

## HOW TO NOMINATE

- Nominee details need to be provided as requested with all the identifying information.
- Nominee biography to be written in 3rd person and without any identifying information
- Summary of submission to be written in 3rd person and keeping in mind to not include any identifying information
- Assessment criteria to be answered without any identifying information
- Letter of Endorsement – should refer to ‘the nominee’ rather than your name
- Good quality image of nominee (min 1, max 2)
- Good quality image of any projects referenced (min 1, max 3)

## IMPORTANT DATES

Nominations open: Tues 15 Aug

Online submissions workshop: Thurs 31 Aug

Nominations close: 6pm Thurs 28 Sept

Awards event: Fri 10 Nov

IWD Leadership Lunch: Fri 1 March 2024

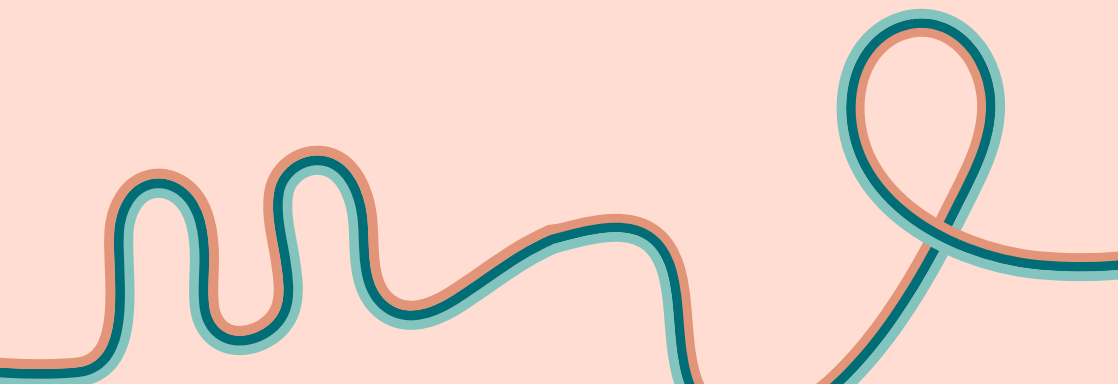
National NAWIC Awards: Fri 3 May 2024

## NOMINATION ENQUIRIES

Nikki Naidu, NAWIC SA Awards Online Manager  
[Nikki.Naidu@hindmarsh.com.au](mailto:Nikki.Naidu@hindmarsh.com.au)  
or

Rebecca Lamont, NAWIC SA Major Events Chair  
[Rebecca.Lamont@lendlease.com](mailto:Rebecca.Lamont@lendlease.com)

TO SUBMIT AN AWARD GO TO  
[WWW.CRYSTALVISIONAWARDSPLATFORM.COM](http://WWW.CRYSTALVISIONAWARDSPLATFORM.COM)



# blind judging process

NAWIC SA is piloting Blind nominations as a progression to ensure a fair and unbiased selection of award winners. NAWIC SA wishes to select from a diverse collection of nominees that includes individuals from different backgrounds, perspectives, and experiences.

This anonymisation is aiming to help prevent unconscious biases and helps in ensuring that candidates are judged solely on their merits. Please continue to nominate yourself or nominate others in the same process as before, the only change we request of all self nominees and nominators is to provide your nominations by removing any identifying information such as name, age, ethnicity from the body of the text within your criteria/questionnaire responses, or any other supporting nomination materials.

NAWIC SA is developing a standard evaluation process that focuses on the relevant criteria with scoring structures to guide the assessments and minimise any subjective judgements.



# crystal vision

---



## PURPOSE AND RECOGNITION

The Crystal Vision Award celebrates the achievement of individuals, businesses or organisations that actively promote and encourage participation and career progression of women in the construction or related industries. This award celebrates the continuing commitment towards advancing the interests of women in the construction industry as a whole using examples such as establishing policies, supporting legislation and creating unique organisational initiatives.

## ELIGIBILITY

Any individual, business or organisation residing or operating in South Australia associated with the construction, property and related industries.

## ASSESSMENT CRITERIA

Nominees are assessed by a panel of industry volunteers based only on the demonstration of the following assessment criteria:

- Have authority to influence and/or make policy decisions beneficial to women in the construction or related industry
- Established policy, enacted legislation, initiated change or created initiatives to benefit and empower women in the construction or related industry
- Actively promoted the inclusion and/or advancement of women in the construction or related industry
- Demonstrated leadership in taking initiatives and implementing them on behalf of women in construction or related industry
- Successfully broken barriers with a 'first' for women in construction or related industry.
- Acted as a role model and/or mentor for women

award sponsored by



lendlease

# continuous improvement

---



## PURPOSE AND RECOGNITION

The Continuous Improvement Award recognises excellence by a female residing in South Australia who has made significant contribution towards improving or advancing a construction project, company process/initiative or industry innovation related to environment, safety or quality. It is intended to acknowledge the efforts of women who have made a tangible difference and are dedicated to advancing the field through their innovative ideas and practices. The award serves as recognition of driving change and to encourage industry to continue to prioritise continuous improvement and innovation.

## ELIGIBILITY

The Continuous Improvement Award may include improvement related to environment, safety or quality within the construction industry that was initiated by a female residing in South Australia from 30 June 2022 to 30 June 2023. The 'improvement / advancement / innovation' can occur in any geographical location.

## ASSESSMENT CRITERIA

Nominees are assessed by a panel of industry volunteers based only on the demonstration of the following assessment criteria:

- Summary of the change or process implemented.
- Description of the nominee's role and the extent of their leadership in the implementation of the improvement.
- Summary of the reason/purpose for implementation of the improvement.
- Description of the barriers, complexities and / or challenges encountered.
- Description of how the change or process was implemented.
- Demonstration of the outcome(s) or impacts of the improvement implemented.

award sponsored by

# Built



# contribution to design

---



## PURPOSE AND RECOGNITION

The Contribution to Design Award recognises excellence by a female residing in South Australia to the design and/or concept of a construction project. This award celebrates the individual's contribution to a construction or fit-out project that delivers innovative or complex design elements and successfully meets or exceeds a client brief.

## ELIGIBILITY

Design contribution may include architecture, interior design, engineering, landscape architecture, urban design, artistic design or heritage design and the project must have reached Practical Completion between 30 June 2022 and 30 June 2023. The project may have been completed in any state or territory of Australia.

## ASSESSMENT CRITERIA

Nominees are assessed by a panel of industry volunteers based only on the demonstration of the following assessment criteria:

- Summary of project's unique or unusual features and technical complexities
- Summary of nominee's role on the project and in the design including the extent of contribution to:
  - a. Best practice design principles
  - b. Exceptional design outcomes
- Description of how the nominee created a successful design that met client needs for function and aesthetics including demonstrated examples of positive relationships with client and stakeholders
- A demonstrated example of a challenge that was overcome and how
- How the nominee approached principles of sustainable development and end-user needs

award sponsored by



**SHAPE**



# project achievement

---



## PURPOSE AND RECOGNITION

The Project Achievement Award recognises a female who has accomplished significant contribution to the construction or fit-out of a project. The accomplished contribution may be process, outcome, innovation or stakeholder focused, but has been a significant element of overall project delivery success.

## ELIGIBILITY

A female residing in South Australia working on a construction project located within South Australia that reached Practical Completion between 30 June 2022 and 30 June 2023. The individual must have successfully managed the significant contribution to the project in a role similar (but not limited to) to a construction manager, project manager, site engineer, contract administrator, site manager, WHS officer, foreperson, leading hand or supervisor.

## ASSESSMENT CRITERIA

Nominees are assessed by a panel of industry volunteers based only on the demonstration of the following assessment criteria:

- Provide examples of how the nominee's management of a team has resulted in a high-performance culture
- Outstanding management of subcontractors, suppliers and associated stakeholders
- Exceptional quality of final workmanship or outcomes
- Exceptional management of construction interfaces e.g. public safety, operational environment stakeholders, neighbours
- Provide evidence or examples of positive budget and programme achievements

award sponsored by

**MYKRA**

Construct · Maintain · Refurbish · Remediate



# business professional

---



## PURPOSE AND RECOGNITION

The Business Professional Award recognises the dedication and excellence of an individual who has played a significant role within an organisation or business as a decision maker (e.g. owner, management, administration, human resources, estimating, legal, finance, not-for-profit). The organisation or business must predominately operate or support the construction or related industry.

## ELIGIBILITY

Any female residing in South Australia who has played a significant business operations role within a business or organisation operating in South Australia related to construction or related industry. Irrespective of position title, the individual must have contributed substantially to business growth or project success within the organisation or business.

## ASSESSMENT CRITERIA

Nominees are assessed by a panel of industry volunteers based only on the demonstration of the following assessment criteria:

- Brief outline of the nominee's organisation or business including trading history, structure and operations.
- Description of nominee's role within the organisation or business and contribution to the success of said organisation or business including:
  - Details of contribution
  - Effect on the organisation or business
  - Details of challenges overcome
  - Evidence of proactive planning, risk management and influence to business or organisation
  - Evidence showing nominees positive management and relationship of key stakeholders
- Outline of nominee's past achievements, aspirations and goals for future participation in the construction industry

award sponsored by

# WGA





# emerging leader

---



## PURPOSE AND RECOGNITION

The Emerging Leader Award recognises the dedication of a female individual working in the construction or related industry for less than five years. This award celebrates the individual's contribution to the construction industry in South Australia, leadership potential and community involvement.

## ELIGIBILITY

Any female individual residing in South Australia who has spent less than five years in a role associated with the construction, property and related industries.

## ASSESSMENT CRITERIA

Nominees are assessed by a panel of industry volunteers based only on the demonstration of the following assessment criteria:

- Proven ability to overcome challenges, demonstration initiative and leadership potential and work as a part of a team
- Demonstration of skills necessary to be successful in the construction industry in the nominee's chosen field
- Examples of leadership that inspires, motivates and provides positive role modelling
- Examples of participation in the construction industry and wider community
- Clear aspirations and goals for future participation in the construction industry and/or wider community

award sponsored by

**BADGE**

PARTNERS IN CONSTRUCTION



# graduate of the year

---



## PURPOSE AND RECOGNITION

The Graduate of the Year Award recognises a female individual's outstanding contribution to their time in the construction or related industry since graduating between 2021 and 2022. This award celebrates the individual's contribution to their business or organisation and goals for future participation in the construction industry.

## ELIGIBILITY

Any female individual who graduated successfully from any construction, engineering, architecture, or trade related course in a registered training/education facility in the class of 2021 or 2022 who resides in South Australia and is currently employed within the construction industry.

## ASSESSMENT CRITERIA

Nominees are assessed by a panel of industry volunteers based only on the demonstration of the following assessment criteria:

- Testament of nominee's quality of work and evidence to be a contributing team member.
- Reference to a time when they were able to utilise something learnt from their time studying that has been transposed to a workplace scenario
- Nominee's commitment to the construction industry or wider community.
- Nominee's long term career goals and what inspired them to study for a career in construction
- Statement from the nominee on how women contribute to the construction industry

award sponsored by

**ENERVEN™**

Connecting you with tomorrow



# terms & conditions



## CONDITIONS OF NOMINATION FOR NAWIC SA AWARDS FOR EXCELLENCE 2023

1. Nominees to address the selection criteria described on the website for the relevant award. Nominees may provide further information if it is relevant to their submission.
2. All nominees must be a financial member of NAWIC SA to nominate or be nominated for an award at the time of nomination and judging.
3. All nominees must be available to attend the Awards night on Friday 10th November 2023 and the IWD Leadership Lunch in March 2024.
4. All NAWIC volunteers except National Board Directors, are eligible to nominate for an award. They must not be involved in the nomination reviews or judging process and must not have access to the award management platform Award Force. They must declare they are nominating prior to the submissions being open.
5. Winning entries from past NAWIC awards may not be resubmitted. Previous entries that did not win may be resubmitted (provided that the nomination complies with the criteria outlined on the website).
6. NAWIC SA reserves the right to extend the final date of entry submissions or, in its discretion, provide extensions to one or more potential nominees. NAWIC SA is under no obligation to provide an extension to any or all nominees, or publish any extension.
7. NAWIC SA reserves the right to use any nomination material including photographs during the Awards night and ongoing marketing including social media.
8. The judges reserve the right to request further information and documentation from a nominee if necessary.
9. The judges reserve the right to determine the eligibility or otherwise of each nomination.
10. The judges reserve the right to make no award if in their view, the standard of nominations is such that it is not appropriate that an award be granted.
11. The judges' decision is final, and no correspondence will be entered in to.
12. NAWIC SA reserve the right to use any nomination details including photographs and text in promotional or other marketing material.
13. A nominee may be nominated for more than one award; however, a separate nomination must be submitted in respect of each award. Joint nominations of up to two persons for each nomination are permitted, however both persons need to satisfy the relevant criteria.
14. NAWIC SA undertakes to use its best endeavours in respect of such use, but will not be responsible for any error, mistake, omission or misrepresentation in respect of the same.
15. Individual nominees must be a resident of South Australia, either permanent or through a visa and must be working in the construction industry.
16. All awards must be submitted by 6pm on Thursday 28th September 2023 including all required assessment criteria.